

Scanning Acoustic Microscope

Uncover Hidden Defects

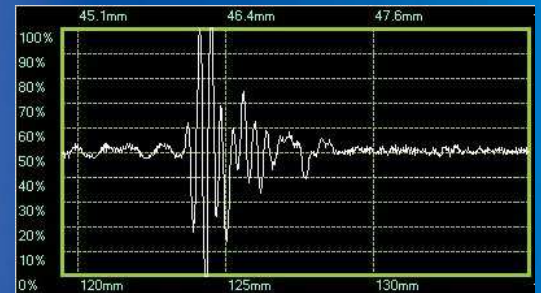


KSI v-200™ SAM

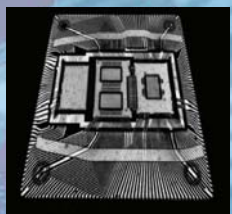
KSI v-200™ covers a wide range of applications where bigger systems are often overdimensioned and to expensive. Built for the economical inspection of small and medium sized samples in labs, research and quality-control, v-200 is a finished product for the non destructive failure diagnosis.

- Best price-performance ratio available
- Plug and play concept, no installation or assembly required
- User friendly
- Compact desktop unit
- Auto-delamination analysis software
- Robust construction with granite platform
- Multi-language graphical user interface Vision™-software
- Scanfield up to 200 mm x 150 mm, z = 100mm
- Magnification up to 125x
- Manual z-drive
- Image resolution up to 2000 x 2000 pixel
- A-, B-, C-, X-Scanmodes
- 15 MHz and 30 MHz Transducer included

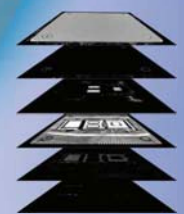
KSI v-200™ - low cost, plug-and-play, easy to operate



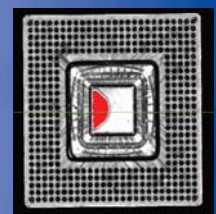
A-Scan of an integrated circuit (IC) *(3)



C-scan, inside of IC



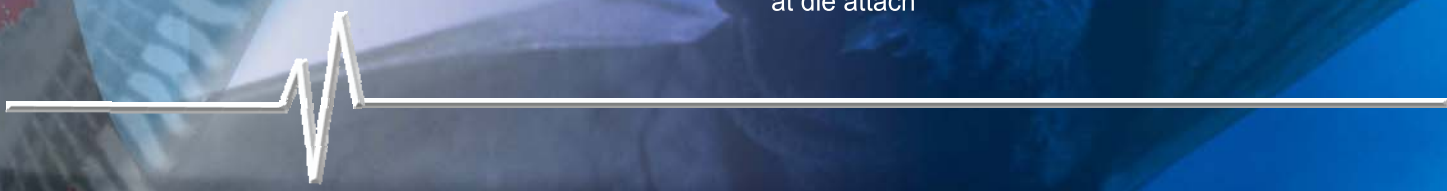
X-scan, layers inside of IC



C-scan, delamination at die attach



B-Scan, die tilt and delamination



v-200 SPECIFICATION

Electronics, rf- and scanning system

High performance RF-interface 100 MHz bandwidth
High Resolution ADC Interface
0.0025 mm length encoder resolution
Multi axis stepper motor system
Scanning range from 1000 µm x 1000 µm to 200 mm x 150 mm ^{*(1)}
Scanning speed: 500 mm/s
Maximum Acceleration 650 mm/s²
Manual z-drive (100mm traverse path)
Sample trunk 450 x 250 x 100 (w/l/h) ^{*(1)}
15 MHz and 30 MHz transducer included
Dimensions (LxWxH) 630 mm x 650 mm x 400 mm

Scanning modes and software features

A-, B-, C-, X- and Auto-Scan
Multi language user interface (for example german, english, chinese, taiwanese, indonesian, spain, ...)
A-scan real time display with time of flight measurement function
Mean-, Peak-, Time-detection
Combo- and meander scan mode
Sample thickness calculation
Reset-Function for easy image reconstruction
Free selectable color coding
Image export in ".jpg" and ".bmp" - format
Storage of all instrument settings with every image
Variable gain, gate width and gate delay setting during scanning
Thresholding, positive-negative peak phase detection: amplitude, mean, bipolar
Phase measurement with automatic delamination detection (selectable)
Length measurement, zoom mode
Image cascade display
Text overlay in A-Scan and all recorded pictures
A-Scan Storage in .bmp format

Options

Working table (for desktop scanner, screen, keyboard and mouse)
Through- and transmission-scan kit
Image analysis software KSI VISION VIEW™
Scanner cover
Transducer compatibility up to 50 MHz for specific application on request

PC Workstation ^{*(2), *(3)}

High performance industrial PC workstation with up-to-date Intel CPU
Operating system: Windows 7 ultimate
LCD flat screen monitor 22 inch
250 GB hard disc
2048 MB RAM
DVD-RW drive

^{*(1)} other dimensions on request

^{*(2)} customer specifications on request

^{*(3)} technical changes to higher specifications without notice

The innovator of scanning acoustic microscopy

Our success factor is our willingness to listen to industry's ever changing requirements for high-resolution failure diagnosis, high-throughput production screening of large sample volume at low costs with easy to operate-systems.

This gives the product portfolio of KSI and our customers the following advantages:

- Plug and play concept
- Lowest cost of ownership
- High quality images
- User friendly
- Proven after-sales service and application supports



15 MHz and 30 MHz transducer included



Kraemer Sonic Industries GmbH

P.O.-Box 1922

D-35745 Herborn

Germany

Tel: 0049(0)2772 957 957

Web: www.ksi-germany.de email: info@ksi-germany.de